



CUSTOMS GENERAL ADMINISTRATION OF MONGOLIA: DIGITAL CUSTOMS



14 August 2024, Ulaanbaatar

CONTENT

- 1 Brief Introduction of Customs IT system →
- 2 The near future in digitalizing MCGA →
- 3 Usage of e-customs in dry port operations →

Furthermore

Government implementing agency under the Ministry of Finance

2,466 employees

Assessment and collection of Customs duties and VAT

Administration and enforcement of Customs legislation

Overall control on imports and exports: Total trade turnover for the year 2023: USD 24.4 bill. USD.

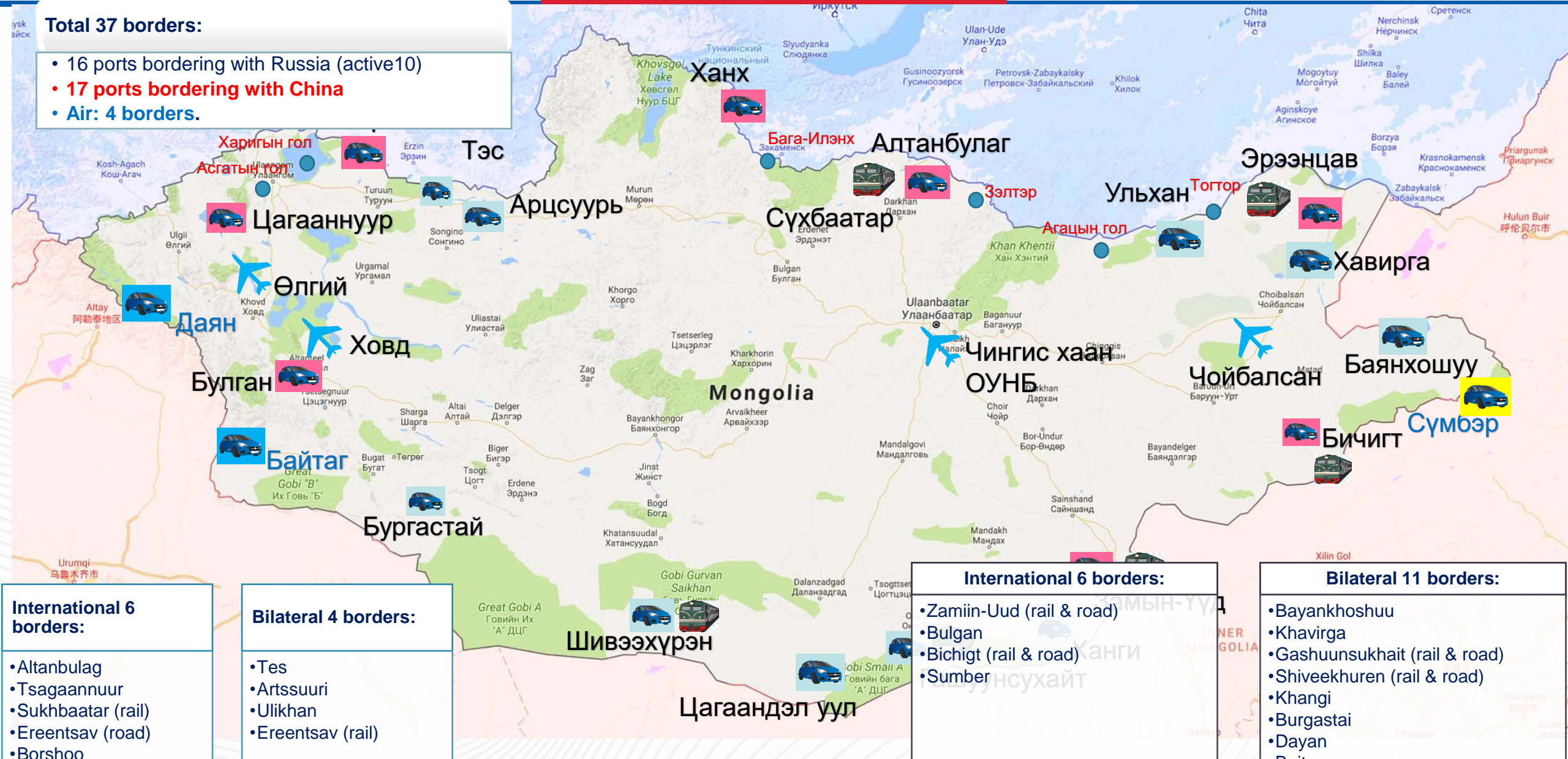
Trading partners 161 countries in 2023

Compilation of foreign trade statistics

MONGOLIAN BORDERS

Total 37 borders:

- 16 ports bordering with Russia (active 10)
- **17 ports bordering with China**
- **Air: 4 borders.**



International 6 borders:

- Altanbulag
- Tsagaannuur
- Sukhbaatar (rail)
- Ereentsav (road)
- Borshoo
- Khankh

Bilateral 4 borders:

- Tes
- Artssuuri
- Ulikhan
- Ereentsav (rail)

International 6 borders:

- Zamiin-Uud (rail & road)
- Bulgan
- Bichigt (rail & road)
- Sumer

Bilateral 11 borders:

- Bayankhoshuu
- Khavirga
- Gashuunsukhait (rail & road)
- Shiveekhuren (rail & road)
- Khangii
- Burgastai
- Dayan
- Baitag
- Tsagaan Del-Uul



Between 1992-2001 Mongolia adopted internationally accepted system ASYCUDA (Automated System for Customs Data) developed by United Nations Conference on Trade and Development (UNCTAD);

From 2001-2010 Mongolian Customs General Administration (MCGA) introduced GAMAS;

Customs automated systems called Customs Automated Information System (CAIS) since 2010;.

“CAIS, CEPS” upgrade project between 2019 and 2024.

Customs clearance procedures are fully automated and the following modules are related to the SEW:

2010 - 2014

- Web based on centralized data base;
- Risk management module;
- WCO Data model 2.0v.

2014 - 2016

- E-Payment System;
- Paperless clearance module (Export);

2017 - 2019

- E-notification and E-statement;
- Integrated merchandise registration system;
- Trade contract registration system (National Taxation Agency);
- License, permission and Certificate System (Ministry of Finance).

2020-2024

- Smart Gate;
- Customs Laboratory Information Management System;
- Electronic signature system;
- Attach customs clearance supporting document electronically;
- The Integrated customs clearance center;
- Self declaration;
- WCO Data model 3.7v;

CAIS

Customs Automated Information System

CERP

Customs ERP (Plan, Performance report, Human resource etc.)

CEPS

Customs External Portal System (Customs Broker, Freight Forwarder, Carrier etc.)

GAALI.MN

Customs E-Service (Self declaration system, E-Payment, E-notification etc.)

E-Payment

E-Payment system(Customs duty and other taxes)

APQS

Animal Plant Quarantine System (Import and Export License)

CUSS

Customs Statistics System (Dashboard, reports)

CROSS-BORDER, INTERNATIONAL

Exchange declaration data and X-ray photo with Russian Federal Customs (IBM MQ)

Exchange manifest data with China customs(IBM MQ)

TIR EPD information with the International Road Union(on going)

GOVERNMENT AGENCY (G2G)

e-license and e-permission with the Ministry of Health;

Vehicle clearance information with the Ministry of Roads and Transportation;

Passenger's cargo information with the Communications Information Technology agency;

Foreign Trade Statistical data with the General Statistics Department;

Customs clearance information with the General Taxation Authority;

OTHERS (G2B, B2G)

HEALTH INFORMATION EXCHANGE

Cargo weight information with Custom's Terminal owner

Customs tax and other duties information with the financial institutions.

Expertise Act with the Mongolian National Chamber of Commerce.





GOVERNMENT BUDGET (2019-2022):

- Rapid control center building and telemonitoring system
- Customs center and branch laboratories as well as their equipment
- Smart gate, X-Ray equipment
- Fiber-optic cable



ADB LOAN (2017-2022):

- Upgrading facilities and equipment at Altanbulag, Sukhbaatar, Bichigt and Borshoo border
- Innovation information and technology
- Foreign trade single window project



China contributes non-refundable aid to Mongolia (2019-2022):

- Upgrading facilities and equipment at Zamiin-Uud, Gashuun Sukhait borders

"CUSTOMS MODERNIZATION" project implemented by the Government of Mongolia in 2019

1

Customs Laboratory Update:

- Increase the capacity of the customs laboratory and upgrade the technical equipment
- Apply for international accreditation
- Reform of regulations related to taking samples for laboratory analysis

2

Modernization of customs inspection equipment:

- Modern X-ray equipment
- Improve an inspection infrastructure

3

Implement monitoring center (targeting):

- Integrating a telecontrol center into the customs inspection procedure.
- Integrate the telecontrol system with international standards, including all customs inspection locations.

4

Implement smart gate:

- Border crossing goods and vehicles are automatically transferring information to the system.
- Improving the coordination of government agencies operating on the border
- Implement smart gate at the border

5

Upgrade Customs system and technical equipment:

- Improving the customs system will allow individuals and businesses to declare their own items.
- Keeping track of the quantity and quality of export products from the manufacturer to where they leave the border, and from imported products

It has a total of 1,726 cameras for 24/7 monitoring of customs houses and branches, including border crossing points, customs terminal zones, customs bonded areas, as well goods, transport and passengers.



Vehicle license plate
recognition

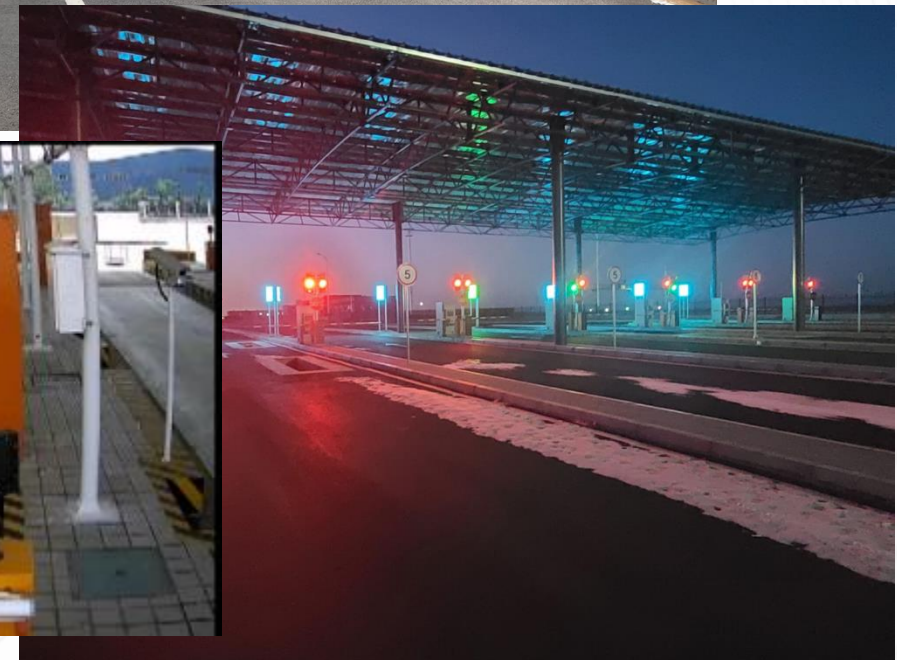
RFID reader

Data Exchange to CAIS

Automatic entry/exit
registration

3 borders (Gashuun sukhait,
Shivee khuren, Zamiin-Uud)

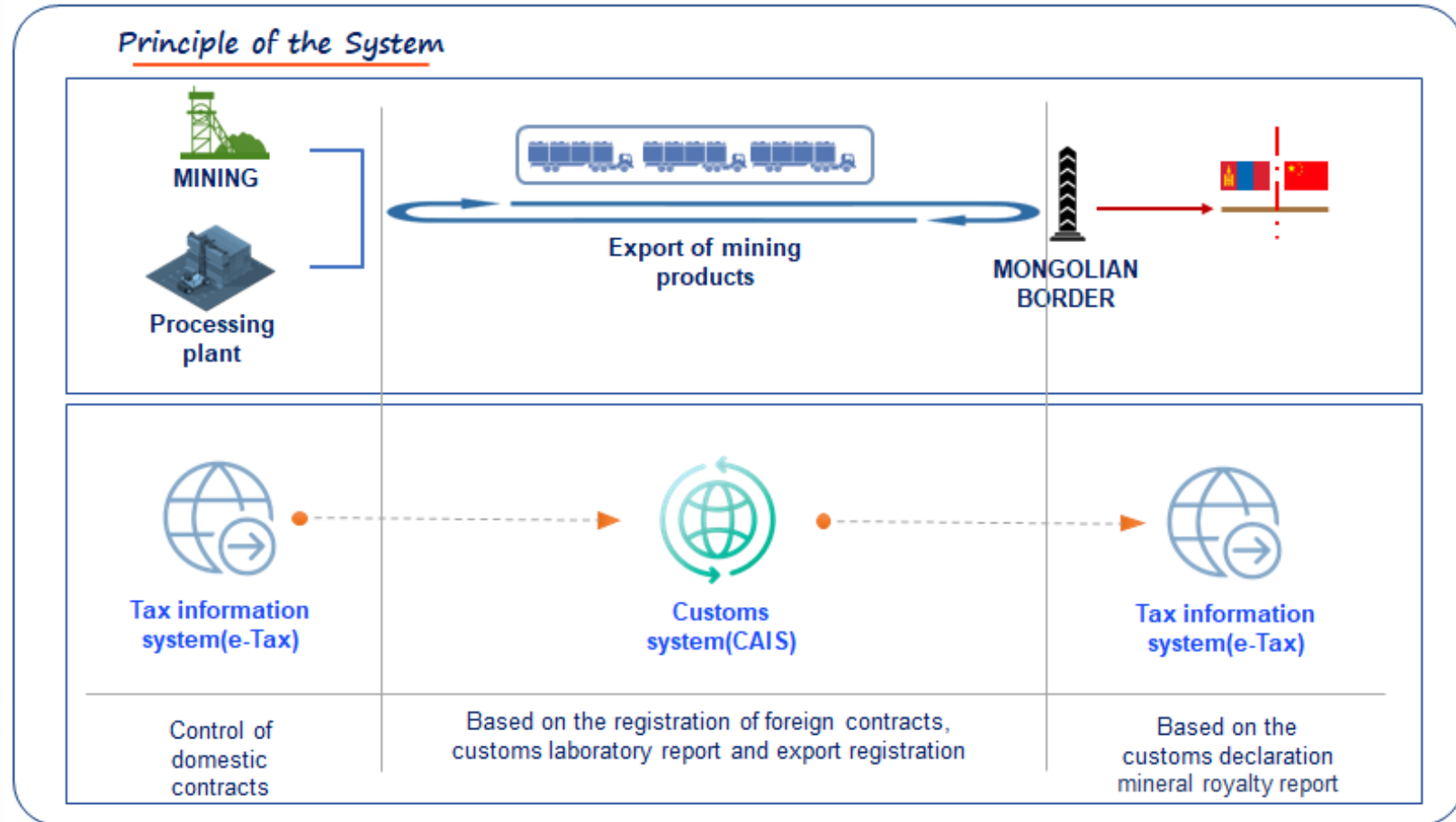
All Customs terminal



АШИГТ МАЛТМАЛЫН
 БҮТЭЭГДЭХҮҮНИЙГ ОЛБОРЛОХООС
 ЭКСПОРТЛОХ ХҮРТЭЛХ БҮХ ҮЕ ШАТ
 ДАМЖЛАГЫН МЭДЭЭЛЛИЙГ
 ЦАХИМ СИСТЕМД БҮРТГЭН ГАРАЛ
 ҮҮСЛИЙГ ТОДОРХОЙЛОХ

ГЭРЭЭ, АМНАТ БАРИМТ, МЭДҮҮЛЭГ,
 ЛАБОРАТОРИЙН ДҮГНЭЛТЭНД
 ТУЛГУУРЛАН ТАТВАРЫН НОГДЛЫГ
 АВТОМАТ СИСТЕМЭЭР
 ТООЦООЛОХ.

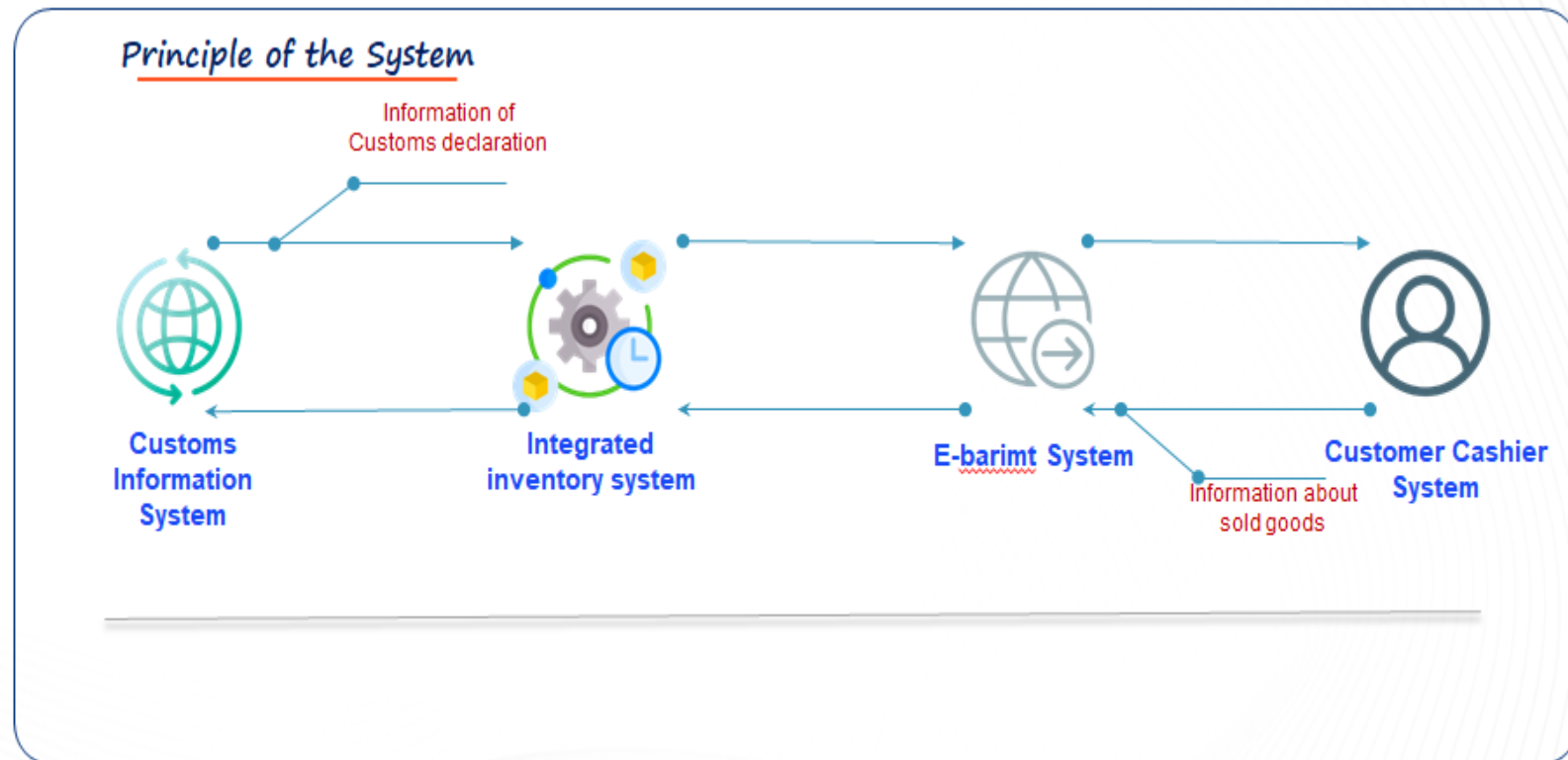
ГААЛИЙН БҮРДҮҮЛЭЛТИЙН ҮЙЛ
 ЯВЦАД ХҮНИЙ ОРОЛЦООГ
 БАГАСГАЖ, ЭРСДЛЭЭС ХАМГААЛАХ



ИМПОРТООР ОРЖ ИРСЭН БАРААГ
ЭЦСИЙН ХЭРЭГЛЭГЧ ХҮРТЭЛХ БҮХ
ҮЕ ШАТ ДАМЖЛАГЫН
МЭДЭЭЛЛИЙГ ЦАХИМ СИСТЕМД
БҮРТГЭН ГАРАЛ ҮҮСЛИЙГ
ТОДОРХОЙЛОХ

ТӨРИЙН БАЙГУУЛЛАГУУДЫН
ХЯНАЛТЫН ТОГТОЛЦОО
ОНОВЧТОЙ ЗОХИОН
БАЙГУУЛАГДАХ, ТАТВАРЫН СУУРЬ
МЭДЭЭЛЭЛ НЭМЭГДЭНЭ

ГААЛИЙН БҮРДҮҮЛЭЛТИЙН ҮЙЛ
ЯВЦАД ХҮНИЙ ОРОЛЦООГ
БАГАСГАЖ, ЭРСДЛЭЭС ХАМГААЛАХ



ГААЛИЙН ЦАХИМ
ҮЙЛЧИЛГЭЭНИЙ СИСТЕМ

Иргэн, хуулийн этгээдэд гаалийн үйлчилгээг цахим хэлбэрээр нэг цэгээс хүргэх портал систем.

Мэдүүлгийн дугаар оруулах

Гаалийн мэдээ, мэдээллийн вэб сайт
customs.gov.mn

Монгол улсын гадаад худалдааны мэдээллийн сан
mongoliatradingportal.gov.mn

Гаалийн зуучлагч, тээвэр зууч, операторын систем
ceps.gaali.mn

Экспорт, импорт хилийн хорио цээрийн гэрчилгээ мэдэгдэл
caps.gaali.mn

Гадаад худалдааны бараа эргэлт

	2019	2020	2021	2022	2023
Импорт 687,994,112.20 * мян.ам.дол					
Импортын бараа эргэлт тээврийн төрлөөр					
Төмөр зам	57%	514,968 * мян.ам.дол			
	61%	689,072 * мян.ам.дол			
Экспорт 1,077,691,937.20 * мян.ам.дол					
Экспортын бараа эргэлт тээврийн төрлөөр					
Төмөр зам	27%	348,474 * мян.ам.дол			
	34%	394,186 * мян.ам.дол			

SELF DECLARATION: 49.6% (4,256,386,873 USD)

- Import: 17,395
- Export: 153,424

CUSTOMS STATEMENT: 9,263

SELF DECLARATION

01

- Export and Import customs declaration
- Passengers declaration

E-PAYMENT

02

- Duty payment (ePayment, Social Pay, Qpay)
- Duty exemption request
- Duty drawback request

CUSTOMS STATEMENT (REFERENCE)

03

- Clearance statement
- Offense statement
- Tax payment reference

CARGO TRACKING

04

- Cargo tracking system by container No, Bill of lading, declaration No etc.

LICENSE / PERMIT

05

- Customs broker license
- Customs bonded warehouse license
- Duty Free Shop License etc.

STATISTICAL & TAX RATE INFORMATION

06

- Foreign trade statistic, HS and tariff information
- HS code and Tax Rate information

Single Electron Window

Advanced Risk Management System(AI, Big Data)

Data analytics on Big Data

AI X-Ray

AI HS Code Recommendation

AI CHATBOT

The digitalization of customs is a key enabler for the successful operation of dry ports in Mongolia, contributing to faster, more transparent, and cost-effective trade operations, thereby supporting the country's broader economic goals.

Customs Automated Clearance System

Single Electron Window

Smart Gate (RFID, GPS, E-Seal)

Block chain Technology

Artificial Intelligence and Machine Learning

AI X-Ray

Internet of Things (IoT)

Data Analytic and Big Data



THANK YOU FOR YOUR
KIND ATTENTION!